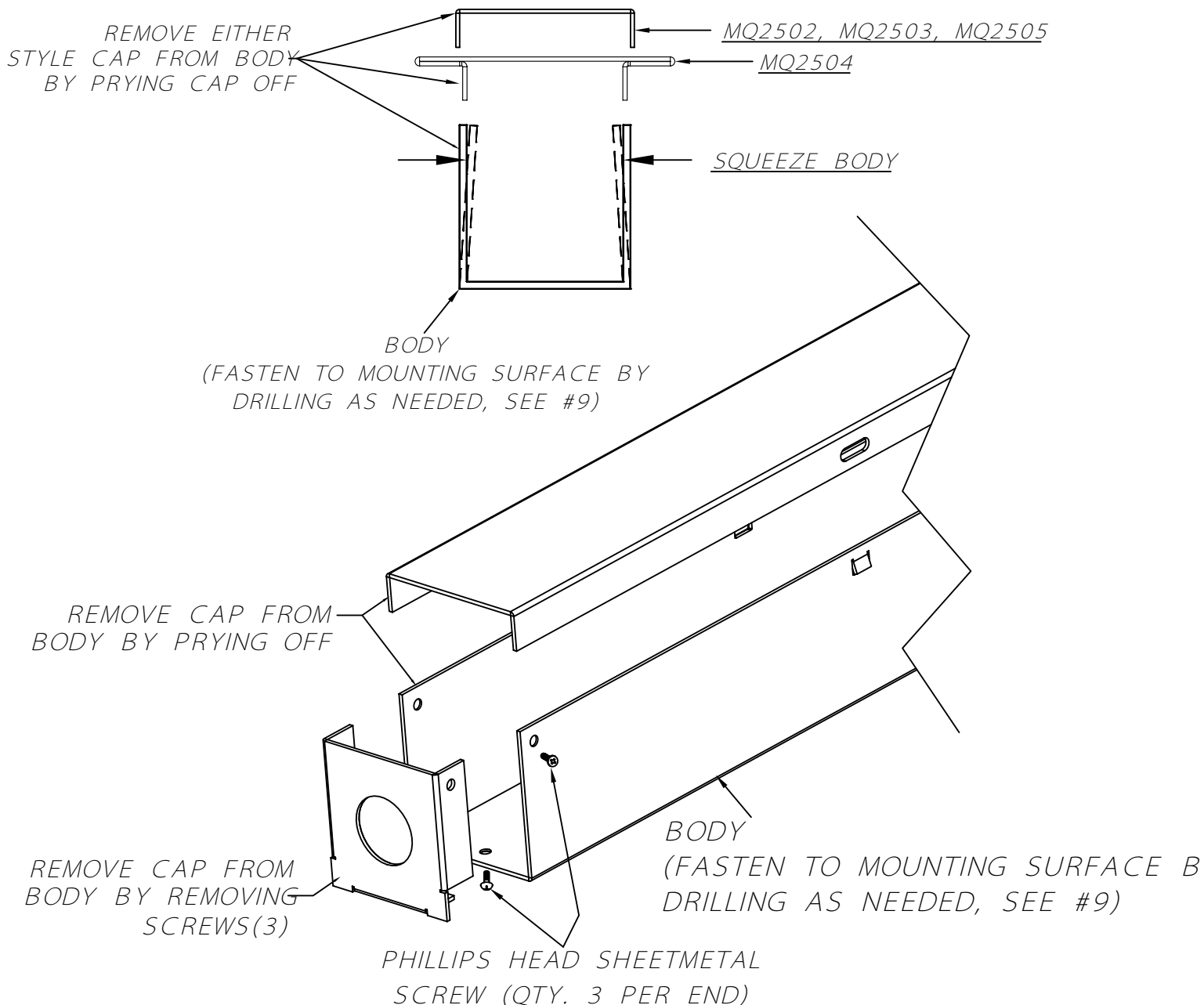


INSTALL INSTRUCTIONS FOR MQ2502, MQ2503, MQ2504, MQ2505
PLEASE READ ALL INSTRUCTIONS CAREFULLY



WIRING INSTRUCTIONS:

1. IMPORTANT: VERIFY ALL POWER HAS BEEN SHUT OFF.....
2. UNSCREW PHILIPS HEAD SHEET METAL SCREWS AND REMOVE END CAP.
3. KNOCK OUT APPROPRIATE K.O.
4. CONNECT FITTINGS TO END CAP.
5. WIRE IN ACCORDANCE WITH THE N.E.C. CODE AND ANY APPLICABLE LOCAL CODES.
6. REPLACE END CAP AND TIGHTEN WITH PHILIPS HEAD SHEET METAL SCREWS.
7. REMOVE OPPOSITE END CAP, INSULATE AND STORE EXTRA WIRES.
8. REPLACE END CAP AND TIGHTEN WITH PHILIPS HEAD SHEET METAL SCREWS.
9. FASTEN BODY TO MOUNTING SURFACE USING FASTENERS APPROPRIATE TO SITE CONDITIONS, BY DRILLING AS NEEDED.
10. ALIGN BODY AND CAP AND APPLY PRESSURE AND SNAP TOGETHER.

ALL DIMENSIONS ARE IN INCHES
UNLESS OTHERWISE SPECIFIED

BELFER LIGHTING

NEW JERSEY, USA - 732-493-2666
 COPYRIGHT © BELFER LIGHTING
 NO RIGHTS ARE GRANTED FOR
 REPRODUCTION, DISCLOSURE, OR USE.

TITLE MQ2502, MQ2503, MQ2504, MQ2505
INSTALLATION INSTRUCTIONS

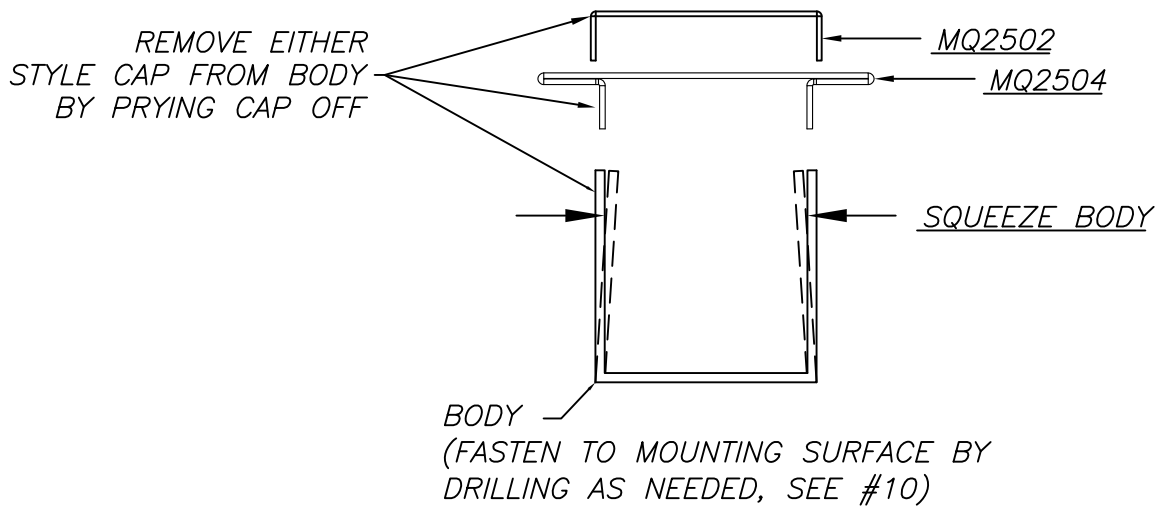
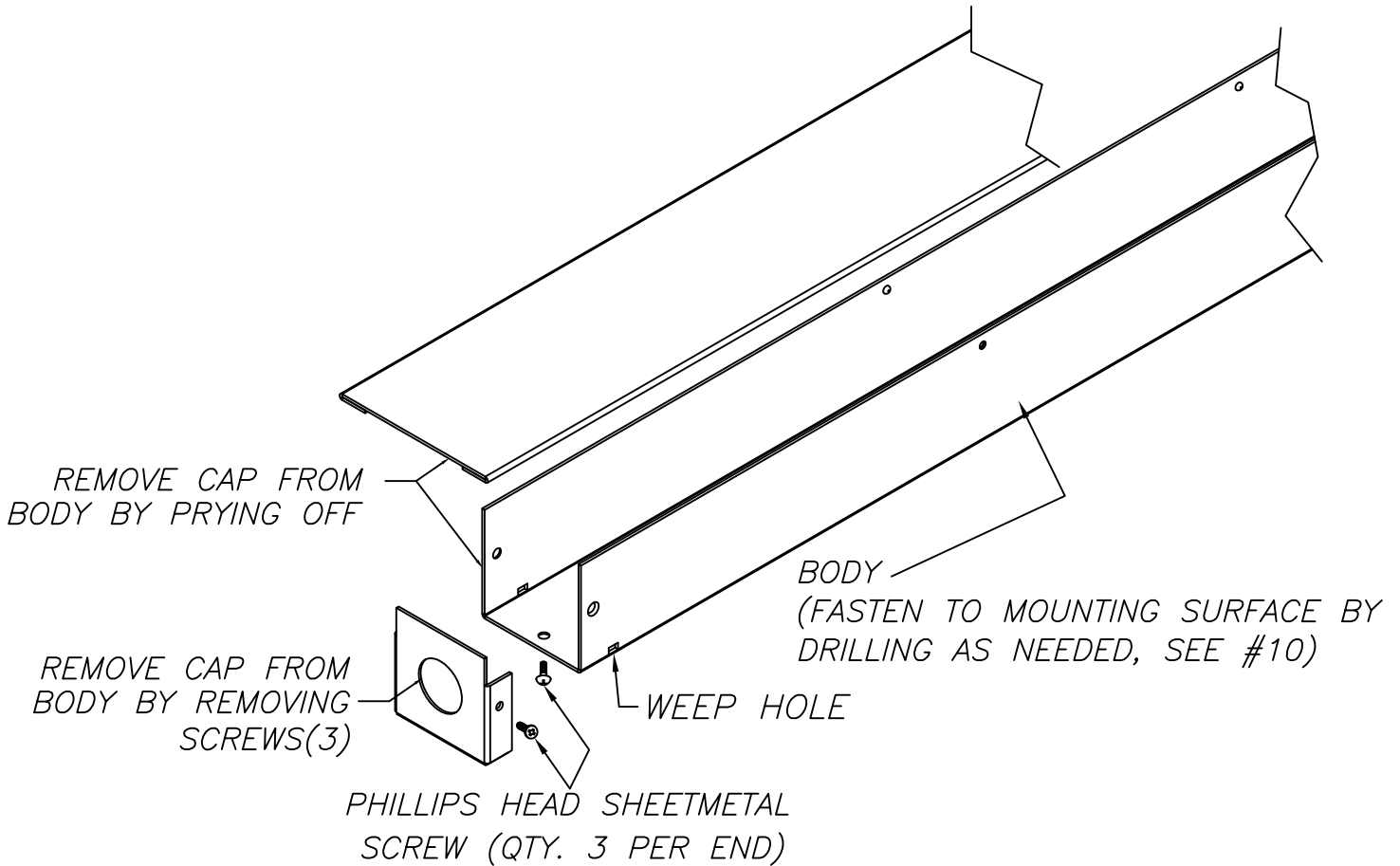
DATE	9/18/17	SCALE	NTS	DRAWN	RPM	APPROVED
SHEET	1 OF 1	DWG. NO.	MQ2502/03/04/05		REV.	0

FRACTIONAL	±1/32
.XX	±0.01
.XXX	±0.005
ANGULAR	±1/2°

**INSTALLATION INSTRUCTIONS FOR MQ2502 & MQ2504 WET LOCATION
PLEASE READ ALL INSTRUCTIONS CAREFULLY**

WIRING INSTRUCTIONS:

1. **IMPORTANT: VERIFY ALL POWER HAS BEEN SHUT OFF.....**
2. **IMPORTANT: USE LAMPS SUITABLE FOR OUTDOOR USE ONLY. (SEE LAMP MANUFACTURERS SPECIFICATIONS AND NOTES.)**
3. **SEPARATE CAP FROM BODY BY PRYING OFF.**
2. **UNSCREW PHILIPS HEAD SHEET METAL SCREWS AND REMOVE END CAP.**



ALL DIMENSIONS ARE IN INCHES
UNLESS OTHERWISE SPECIFIED

BELFER LIGHTING

NEW JERSEY, USA - 732-493-2666
COPYRIGHT © BELFER LIGHTING
NO RIGHTS ARE GRANTED FOR
REPRODUCTION, DISCLOSURE, OR USE.

TITLE MQ2502/MQ2504 WET LOCATION INSTALL

DATE	9/14/17	SCALE	NTS	DRAWN	RPM	APPROVED
SHEET	1 OF 2	DWG. NO.	MQ2502/2504		REV.	0

FRACTIONAL	±1/32
.XX	±0.01
.XXX	±0.005
ANGULAR	±1/2°

**INSTALLATION INSTRUCTIONS FOR MQ2502 & MQ2504 WET LOCATION
PLEASE READ ALL INSTRUCTIONS CAREFULLY**

4. KNOCK OUT APPROPRIATE K.O.
5. CONNECT FITTINGS TO END CAP.
6. WIRE IN ACCORDANCE WITH THE N.E.C. CODE AND ANY APPLICABLE LOCAL CODES.
7. REPLACE END CAP AND TIGHTEN WITH PHILIPS HEAD SHEET METAL SCREWS.
8. REMOVE OPPOSITE END CAP, INSULATE AND STORE EXTRA WIRES.
9. REPLACE END CAP AND TIGHTEN WITH THREE PHILIPS HEAD SHEET METAL SCREWS.
10. FASTEN BODY TO MOUNTING SURFACE USING FASTENERS APPROPRIATE TO SITE CONDITIONS BY DRILLING AS NEEDED.
11. ALIGN BODY WITH THE CAP AND APPLY PRESSURE TO SNAP THE BODY AND CAP TOGETHER.
12. TO JOIN MULTIPLE FIXTURES, WHERE END CAPS WILL NOT BE USED, ASSEMBLE AS SHOWN BELOW.

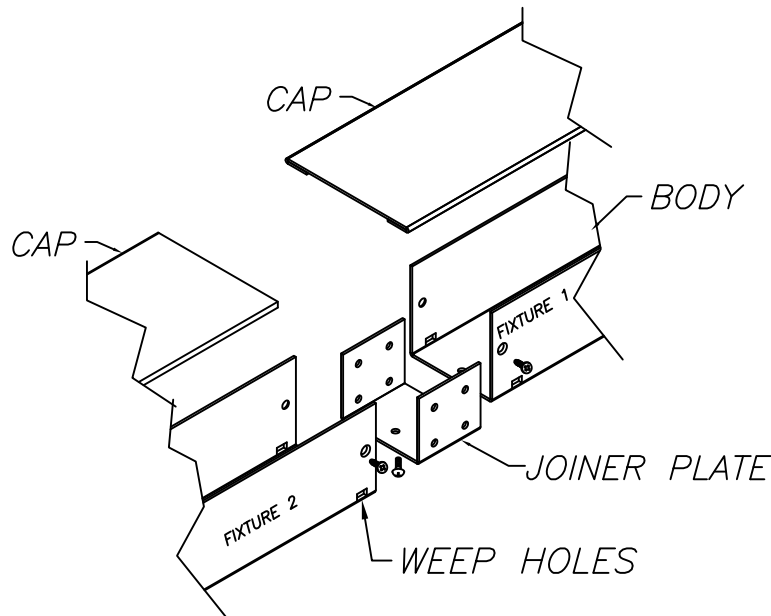
STRAIGHT FIXTURES (SHOWN BELOW)

INSERT JOINER INTO FIXTURE 1, SCREW INTO PLACE USING SCREWS PROVIDED, INSERT JOINER INTO FIXTURE 2, SCREW INTO PLACE.

FOR MITERED CORNERS (NOT SHOWN)

INSERT "L" SHAPED JOINER INTO FIXTURE 1, SCREW INTO PLACE USING SCREWS PROVIDED, INSERT JOINER INTO FIXTURE 2, SCREW INTO PLACE.

ON BOTH STYLE FIXTURES INSURE "WEEP HOLES" ARE CLEAR



NOTE: IT MAY BE NECESSARY WITH 10 FT. CURVED SECTIONS TO APPLY HAND PRESSURE TO CLOSE THE UPRIGHT PORTION OF THE BODY ALONG THE ENTIRE LENGTH BEFORE INSTALLING THE CAP. THIS WILL ENSURE A TIGHT FIT.

ALL DIMENSIONS ARE IN INCHES
UNLESS OTHERWISE SPECIFIED

BELFER LIGHTING

NEW JERSEY, USA - 732-493-2666
COPYRIGHT © BELFER LIGHTING
NO RIGHTS ARE GRANTED FOR
REPRODUCTION, DISCLOSURE, OR USE.

TITLE MQ2502/MQ2504 WET LOCATION INSTALL

DATE 9/14/17 SCALE NTS DRAWN RPM APPROVED

SHEET 2 OF 2 DWG. NO. MQ2502/2504 REV. 0