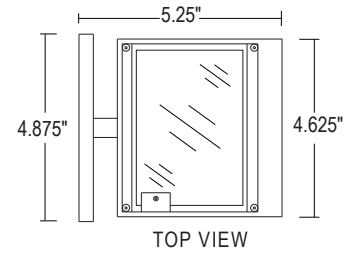
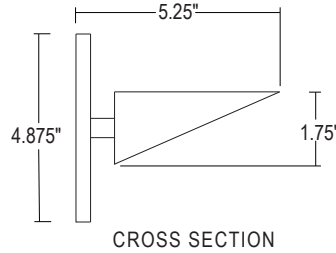
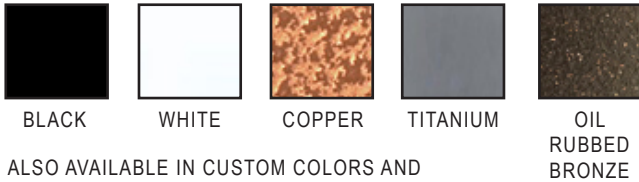


PROJECT

TYPE



- Cast Aluminum Housing
- Round Backplate standard
- 2,700 Lumens, 26 Watts standard
- 105 Lumens per Watt
- 0-10V Dimming Compatible
- Universal Voltage (120-277V)
- Clear Micro Prismatic Lens standard
- Rich Powder Coat Finish
- Recommended Mounting Box: 4" Octagonal, min. 2" deep
- UL and CUL Listed Damp Location



ALSO AVAILABLE IN CUSTOM COLORS AND RAW CAST ALUMINUM (NO FINISH)

Modifications and custom configurations are available. Additional Kelvin and CRI options are available. Please consult factory.

ORDERING FORMAT

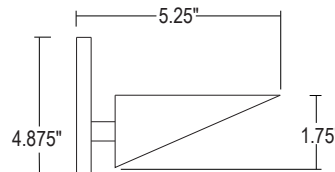
| <u>SERIES</u> | <u>DIMMING</u> | <u>KELVIN</u> | <u>CRI</u> | <u>FINISH</u> | <u>OPTIONAL ACCESSORIES</u> |
|-----------------------------------|---|---------------|-------------|---|---|
| WS-6215-LED-Z10 The LED Wedge™ | U 0-10V Dimming to 10% | 27 2700K | 90 90+ | WHP White Powder Coat | <u>DIFFUSER</u> WS-SD-S2 Saw Tooth Diffuser |
| | ELSD-U eldoLED SOLOdrive 0-10V Dimming to 0.1% (remote only) | 30 3000K | 35 3500K | BLP Black Powder Coat | <u>ADJUSTMENT</u> WS-SK Swivel Knuckle allows for 34° adjustment (17° up or down) |
| | | | | COP Copper Powder Coat | <small>Finish selection will match fixture unless otherwise specified.</small> |
| | | | | TTP Titanium Powder Coat | <u>LENS</u> WS-L-S2-MP-CL Clear Micro Prismatic Lens (standard with fixture) |
| | | | | OBP Oil Rubbed Bronze Powder Coat | WS-L-S2-MP-FR Frosted Micro Prismatic Lens |
| | | | | RAW Raw Cast Aluminum (no finish) | <u>BACKPLATE</u> WS-RD Round Backplate (standard with fixture) |
| | | | | CC Custom Color | WS-SQ Square Backplate |
| | | | | | <small>Finish selection will match fixture unless otherwise specified.</small> |



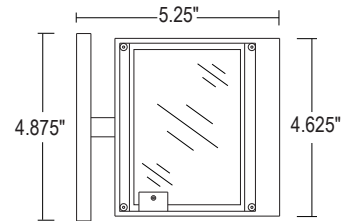
WS 6215-LED-Z10-DW
The LED Wedge™
 DIM TO WARM LED WALL SCONCE

PROJECT

TYPE



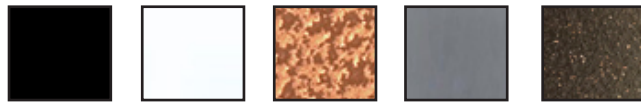
CROSS SECTION



TOP VIEW

- Cast Aluminum Housing
- Round Backplate standard
- 2,800 Lumens, 24 Watts standard
- 117 Lumens per Watt
- 3000K - 1800K Range
- 0-10V Dimming Compatible
- Universal Voltage (120-277V)
- Clear Micro Prismatic Lens standard
- Rich Powder Coat Finish
- Recommended Mounting Box: 4" Octagonal, min. 2" deep
- UL and CUL Listed Damp Location

Modifications and custom configurations are available.
 Please consult factory.



BLACK WHITE COPPER TITANIUM OIL RUBBED BRONZE

ALSO AVAILABLE IN CUSTOM COLORS AND
 RAW CAST ALUMINUM (NO FINISH)

ORDERING FORMAT

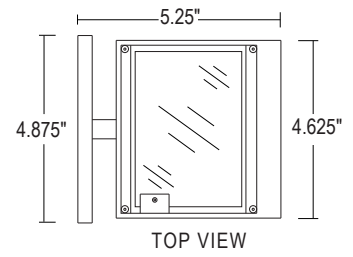
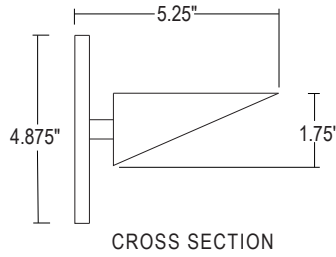
| <u>SERIES</u> | <u>DIMMING</u> | <u>KELVIN RANGE</u> | <u>CRI</u> | <u>FINISH</u> | <u>OPTIONAL ACCESSORIES</u> |
|--|--|--|------------------|--|--|
| WS-6215-LED-Z10 The LED Wedge™ | U 0-10V Dimming to 10% | DW Dim to Warm 3000K to 1800K | 90 90+ | WHP White Powder Coat | DIFFUSER WS-SD-S2 Saw Tooth Diffuser |
| | ELSD-U eldoLED SOLOdrive 0-10V Dimming to 0.1% (remote only) | | | BLP Black Powder Coat | ADJUSTMENT WS-SK Swivel Knuckle allows for 34° adjustment (17° up or down) |
| | | | | COP Copper Powder Coat | <small>Finish selection will match fixture unless otherwise specified.</small> |
| | | | | TTP Titanium Powder Coat | LENS WS-L-S2-MP-CL Clear Micro Prismatic Lens (standard with fixture) |
| | | | | OBP Oil Rubbed Bronze Powder Coat | BACKPLATE WS-RD Round Backplate (standard with fixture) |
| | | | | RAW Raw Cast Aluminum (no finish) | WS-SQ Square Backplate |
| | | | | CC Custom Color | <small>Finish selection will match fixture unless otherwise specified.</small> |



WS 6215-LED-ELVT-1-DW
The LED Wedge™
 DIM TO WARM LED WALL SCONCE

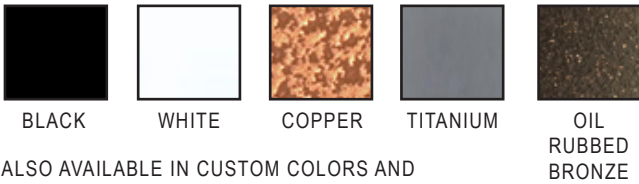
PROJECT

TYPE



- Cast Aluminum Housing
- Round Backplate standard
- 2,800 Lumens, 24 Watts standard
- 117 Lumens per Watt
- 3000K - 1800K Range
- 120V AC ELV/TRIAC LED Dimming Compatible
- Dimming to 5% standard
- Clear Micro Prismatic Lens standard
- Rich Powder Coat Finish
- Recommended Mounting Box: 4" Octagonal, min. 2" deep
- UL and CUL Listed Damp Location

Modifications and custom configurations are available.
 Please consult factory.



ALSO AVAILABLE IN CUSTOM COLORS AND
 RAW CAST ALUMINUM (NO FINISH)

ORDERING FORMAT

SERIES
 WS-6215-LED-ELVT-1
 The LED Wedge™

KELVIN RANGE
 DW
 Dim to Warm
 3000K to 1800K

CRI
 90
 90+

FINISH
 WHP
 White Powder Coat
 BLP
 Black Powder Coat
 COP
 Copper Powder Coat
 TTP
 Titanium Powder Coat
 OBP
 Oil Rubbed Bronze Powder Coat
 RAW
 Raw Cast Aluminum
 (no finish)
 CC
 Custom Color

OPTIONAL ACCESSORIES
DIFFUSER
 WS-SD-S2
 Saw Tooth Diffuser

ADJUSTMENT
 WS-SK
 Swivel Knuckle
 allows for 34° adjustment
 (17° up or down)

Finish selection will match fixture unless otherwise specified.

LENS
 WS-L-S2-MP-CL
 Clear Micro Prismatic Lens
 (standard with fixture)
 WS-L-S2-MP-FR
 Frosted Micro Prismatic Lens

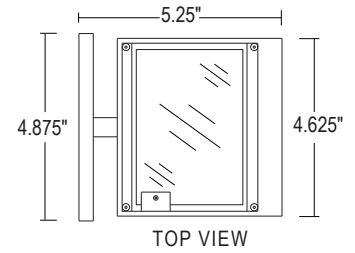
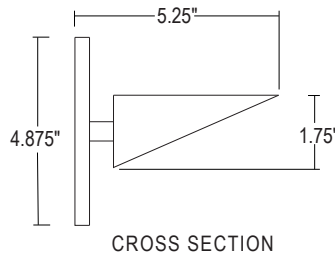
BACKPLATE
 WS-RD
 Round Backplate
 (standard with fixture)
 WS-SQ
 Square Backplate

Finish selection will match fixture unless otherwise specified.



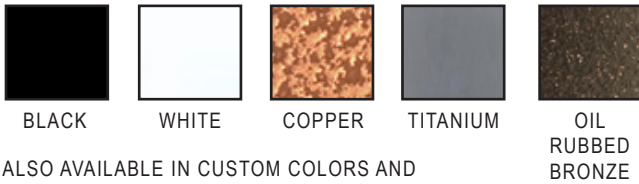
PROJECT

TYPE



- Cast Aluminum Housing
- Round Backplate standard
- 2,600 Lumens, 20 Watts standard
- 130 Lumens per Watt
- 120V AC ELV LED Dimming Compatible
- Dimming to 15% standard
 (Dimming to 0% possible with select controls)
- Clear Micro Prismatic Lens standard
- Rich Powder Coat Finish
- Recommended Mounting Box: 4" Octagonal
- UL and CUL Listed Damp Location

Modifications and custom configurations are available.
 Additional Kelvin and CRI options are available.
 Please consult factory.



ALSO AVAILABLE IN CUSTOM COLORS AND
 RAW CAST ALUMINUM (NO FINISH)

ORDERING FORMAT

| <u>SERIES</u> | <u>KELVIN</u> | <u>CRI</u> | <u>FINISH</u> | <u>OPTIONAL ACCESSORIES</u> | |
|-------------------------------------|---------------|------------|--|---|---|
| WS-6215-LED-ELV-1 The LED Wedge™ | 27 2700K | 90 90+ | WHP White Powder Coat | DIFFUSER | ADJUSTMENT |
| | 30 3000K | | BLP Black Powder Coat | WS-SD-S2 Saw Tooth Diffuser | WS-SK Swivel Knuckle allows for 34° adjustment (17° up or down) |
| | 35 3500K | | COP Copper Powder Coat | | <small>Finish selection will match fixture unless otherwise specified.</small> |
| | | | TTP Titanium Powder Coat | LENS | BACKPLATE |
| | | | OBP Oil Rubbed Bronze Powder Coat | WS-L-S2-MP-CL Clear Micro Prismatic Lens (standard with fixture) | WS-RD Round Backplate (standard with fixture) |
| | | | RAW Raw Cast Aluminum (no finish) | WS-L-S2-MP-FR Frosted Micro Prismatic Lens | WS-SQ Square Backplate |
| | | | CC Custom Color | | <small>Finish selection will match fixture unless otherwise specified.</small> |



RICH, DURABLE POWDER COAT FINISHES



WHP
WHITE POWDER COAT



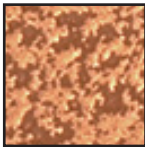
BLP
BLACK POWDER COAT



TTP
TITANIUM POWDER COAT



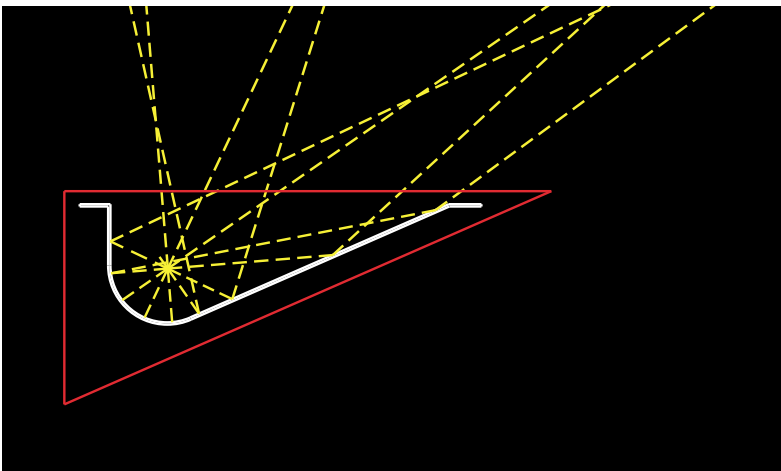
OBP
OIL RUBBED BRONZE POWDER COAT



COP
COPPER POWDER COAT

ALSO AVAILABLE IN
RAW RAW CAST ALUMINUM
(NO FINISH)
CC CUSTOM COLORS

COMPUTER DESIGNED SPECULAR REFLECTORS (halogen fixtures only)



LED FIXTURES DESIGNED TO PERFORM AS OUR HALOGEN FIXTURES

SPECIFICATION GRADE CONSTRUCTION



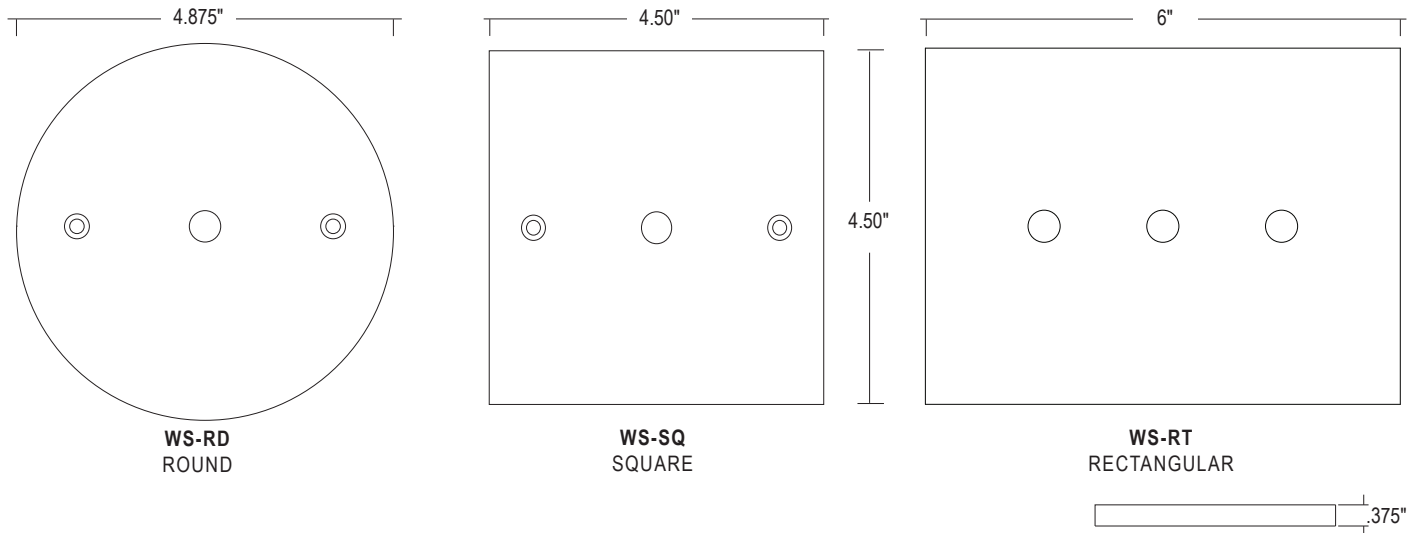
SPECIFICATION GRADE
CAST ALUMINUM



SPECIFICATION GRADE
FORMED STEEL

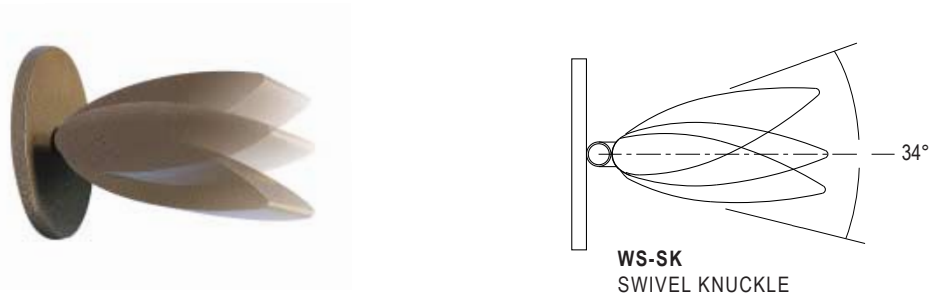
WALL SCONCE BACKPLATES

OUR WALL SCONCE FIXTURES COME STANDARD WITH ROUND, SQUARE OR RECTANGULAR BACKPLATES IN MATCHING POWDERCOAT FINISHES



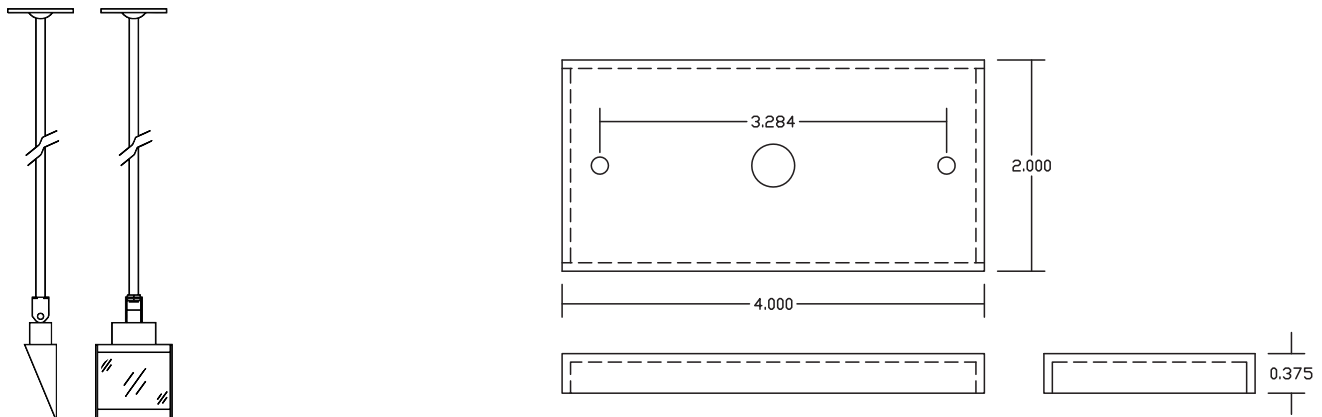
SWIVEL KNUCKLES

OUR OPTIONAL SWIVEL KNUCKLE ALLOWS FOR 34° ADJUSTMENT (17° UP OR DOWN) FOR OPTIMUM LIGHT DIRECTION



CUSTOMIZATION

CUSTOM ACCESSORIES ARE AVAILABLE INCLUDING STEMS, SHIELDING, SHROUDS AND BACKPLATES. PLEASE CONSULT THE FACTORY ON YOUR CUSTOM DESIGNED PROJECT.



| | ADJUSTMENTS | | BACKPLATES | |
|-------------------------------|------------------------------|--|-------------------------------|-------------------------------|
| | SWIVEL KNUCKLE | | STANDARD BACKPLATE | OPTIONAL BACKPLATE |
| WEDGE™ | | | | |
| WS-6215-HAL | WS-SK | | WS-RD | WS-SQ |
| WS-6215-LED-Z10 | WS-SK | | WS-RD | WS-SQ |
| WS-6215-LED-Z10-DW | WS-SK | | WS-RD | WS-SQ |
| WS-6215-LED-ELV-1 | WS-SK | | WS-RD | WS-SQ |
| WS-6215-LED-ELVT-1-DW | WS-SK | | WS-RD | WS-SQ |
| VARIAL™ | | | | |
| WS-6230-HAL | INCL. | | WS-RD | WS-SQ |
| WS-6230-LED-ELV-1 | INCL. | | WS-RD | WS-SQ |
| WEDGE LENS™ | | | | |
| WS-7215-HAL | WS-SK | | WS-SQ | WS-RD |
| WS-7215-LED-ELV-1 | WS-SK | | WS-SQ | WS-RD |
| DOUBLE WEDGE LENS™ | | | | |
| WS-7230-HAL | WS-SK | | WS-RT | N/A |
| WS-7230-LED-ELV-1 | WS-SK <i>(requires 2)</i> | | WS-RT | N/A |
| ADA WEDGE™ | | | | |
| WS-8815-HAL | N/A | | WS-RD-LP | N/A |

| | DIFFUSERS | | LENSES | | | | |
|-------------------------------|-----------------------------------|------------|---------------------------|-----------------------------|--------------------------------------|--|--------------------------------------|
| | SAW TOOTH DIFFUSER | | CLEAR TEMPERED | FROSTED TEMPERED | CLEAR MICRO PRISMATIC | FROSTED MICRO PRISMATIC | CLEAR DIAMOND PATTERN |
| WEDGE™ | | | | | | | |
| WS-6215-HAL | WS-SD-S1 | WS-L-S1-CL | WS-L-S1-FR | N/A | N/A | N/A | |
| WS-6215-LED-Z10 | WS-SD-S2 | N/A | N/A | WS-L-S2-MP-CL | WS-L-S2-MP-FR | N/A | |
| WS-6215-LED-Z10-DW | WS-SD-S2 | N/A | N/A | WS-L-S2-MP-CL | WS-L-S2-MP-FR | N/A | |
| WS-6215-LED-ELV-1 | WS-SD-S2 | N/A | N/A | WS-L-S2-MP-CL | WS-L-S2-MP-FR | N/A | |
| WS-6215-LED-ELVT-1-DW | WS-SD-S2 | N/A | N/A | WS-L-S2-MP-CL | WS-L-S2-MP-FR | N/A | |
| VARIAL™ | | | | | | | |
| WS-6230-HAL | WS-SD-S1 | WS-L-S1-CL | WS-L-S1-FR | N/A | N/A | N/A | |
| WS-6230-LED-ELV-1 | WS-SD-S2 | N/A | N/A | WS-L-S2-MP-CL | WS-L-S2-MP-FR | N/A | |
| WEDGE LENS™ | | | | | | | |
| WS-7215-HAL | WS-SD-S3 | WS-L-S3-CL | WS-L-S3-FR | WS-L-S3-MP-CL | WS-L-S3-MP-FR | WS-L-S3-DP-CL | |
| WS-7215-LED-ELV-1 | WS-SD-S3 | N/A | N/A | WS-L-S3-MP-CL | WS-L-S3-MP-FR | WS-L-S3-DP-CL | |
| DOUBLE WEDGE LENS™ | | | | | | | |
| WS-7230-HAL | WS-SD-S4 | WS-L-S4-CL | WS-L-S4-FR | WS-L-S4-MP-CL | WS-L-S4-MP-FR | WS-L-S4-DP-CL | |
| WS-7230-LED-ELV-1 | WS-SD-S4 | N/A | N/A | WS-L-S4-MP-CL | WS-L-S4-MP-FR | WS-L-S4-DP-CL | |
| ADA WEDGE™ | | | | | | | |
| WS-8815-HAL | WS-SD-S1 | WS-L-S1-CL | WS-L-S1-FR | N/A | N/A | N/A | |