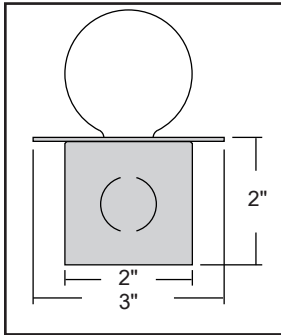


BELFER LIGHTING

TOOLS FOR THE LIGHTING PROFESSIONAL

MQ 2505

2"x2" RECESSED WITH 3" FACE
CANDELABRA BASE INCANDESCENT
MARQUEE™ STRIP



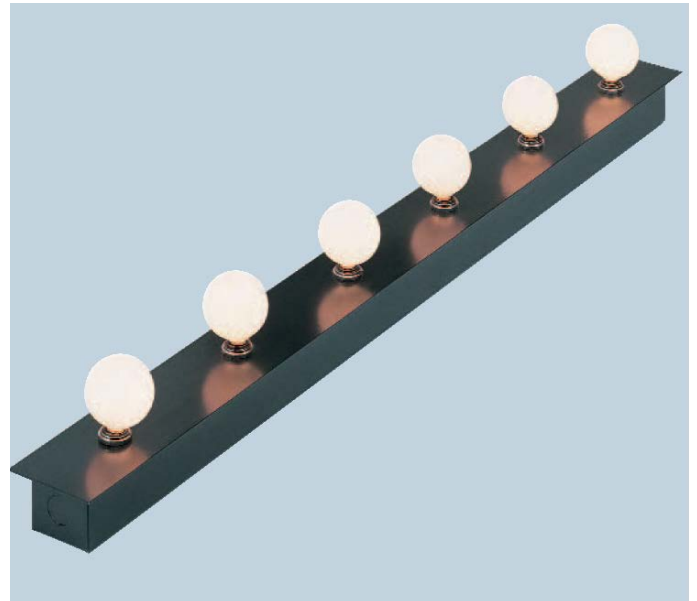
CROSS SECTION

- Straight or Mitered
- Candelabra Base Sockets
- Candelabra Base Lamp to 60 Watt
- Lamp Spacing Options:
 - 6" On Center
 - 12" On Center
 - Custom Lamp Spacing Available
- Constructed of Extruded Aluminum
- Standard Finish Options:
 - Satin Aluminum
 - White Powder Coat
 - Black Powder Coat
 - Custom Finishes are Available
- Order by the Foot
- UL and CUL Listed Damp Location

PROJECT

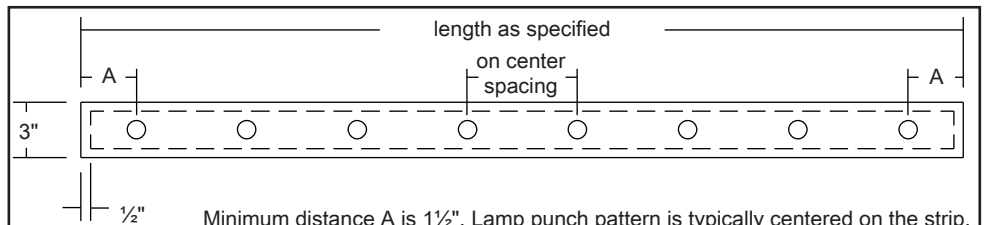
TYPE

CATALOG#



ACCESSORIES AND FABRICATION SHEETS

- A complete line of optional accessories such as baffles, lamp guards, multi-circuiting, decorative end caps and Decora switches and outlets are available. See Accessory Sheet
- Mitered Corner cuts require fabrication information at time of released order. See Mitered Fabrication sheet.
- Custom Baffles can be manufactured to your specifications. See Custom Baffle Fabrication Sheet.



The MQ 2505 is supplied with a faceplate that overlaps the recessed body by 1/2" on all four sides. Bodies are shipped 1" shorter than specified length.

Ordering Format *choose one from each category*

SERIES	LAMP SPACING	FINISH	STRAIGHT or MITERED
MQ 2505 Marquee	<input type="checkbox"/> 6 6" on center	<input type="checkbox"/> SA Satin Aluminum	<input type="checkbox"/> F Straight Footage
	<input type="checkbox"/> 12 12" on center	<input type="checkbox"/> WP White Powder Coat	<input type="checkbox"/> FM Mitered Footage Mitered and applications require a fabrication sheet.
		<input type="checkbox"/> BP Black Powder Coat	
		<input type="checkbox"/> CC Custom Color	



BELFER LIGHTING

PO Box 2079, Ocean NJ 07712

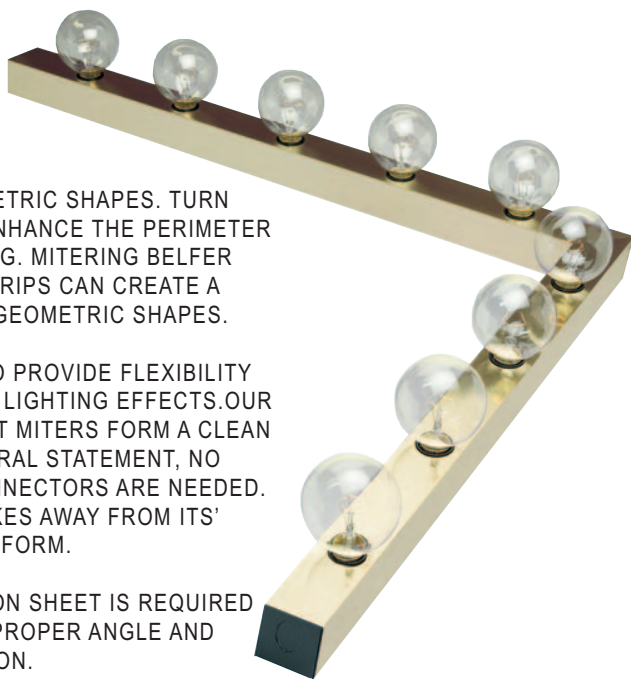
Modifications and custom configurations are available. Please contact our Sales Department.

(732) 493-2666 info@belfer.com www.belfer.com

FORM GEOMETRIC SHAPES. TURN CORNERS. ENHANCE THE PERIMETER OF A BUILDING. MITERING BELFER MARQUEE STRIPS CAN CREATE A VARIETY OF GEOMETRIC SHAPES.

DESIGNED TO PROVIDE FLEXIBILITY IN CREATING LIGHTING EFFECTS. OUR FACTORY CUT MITERS FORM A CLEAN ARCHITECTURAL STATEMENT, NO SPECIAL CONNECTORS ARE NEEDED. NOTHING TAKES AWAY FROM ITS' BEAUTY AND FORM.

A FABRICATION SHEET IS REQUIRED TO ENSURE PROPER ANGLE AND LAMP POSITION.

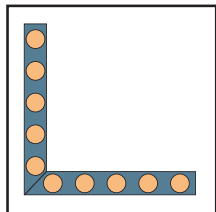


PROJECT _____

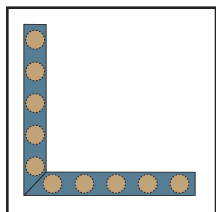
TYPE _____

CATALOG# _____

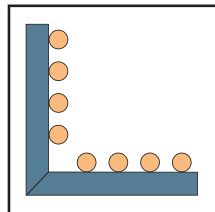
SELECT LAMP ORIENTATION: _____



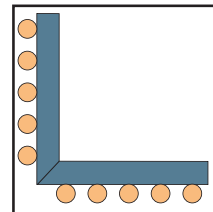
☐ Lamp Up



☐ Lamp Down

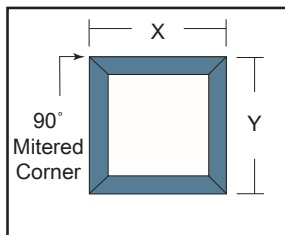


☐ Lamp In



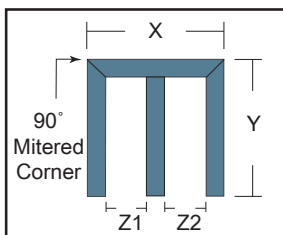
☐ Lamp Out

SELECT MITER CONFIGURATION: _____



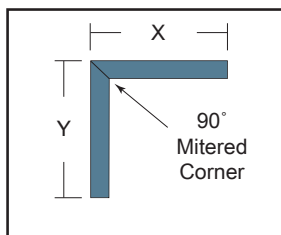
☐ Standard Box Configuration

X = _____
Y = _____



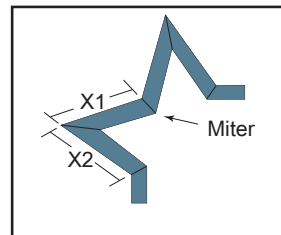
☐ Standard Mirror Configuration

X = _____
Y = _____
Z1 = _____
Z2 = _____



☐ Standard Corner Configuration

X = _____
Y = _____



☐ Custom Angle Configuration

Job Plans or Drawings are required



PROJECT

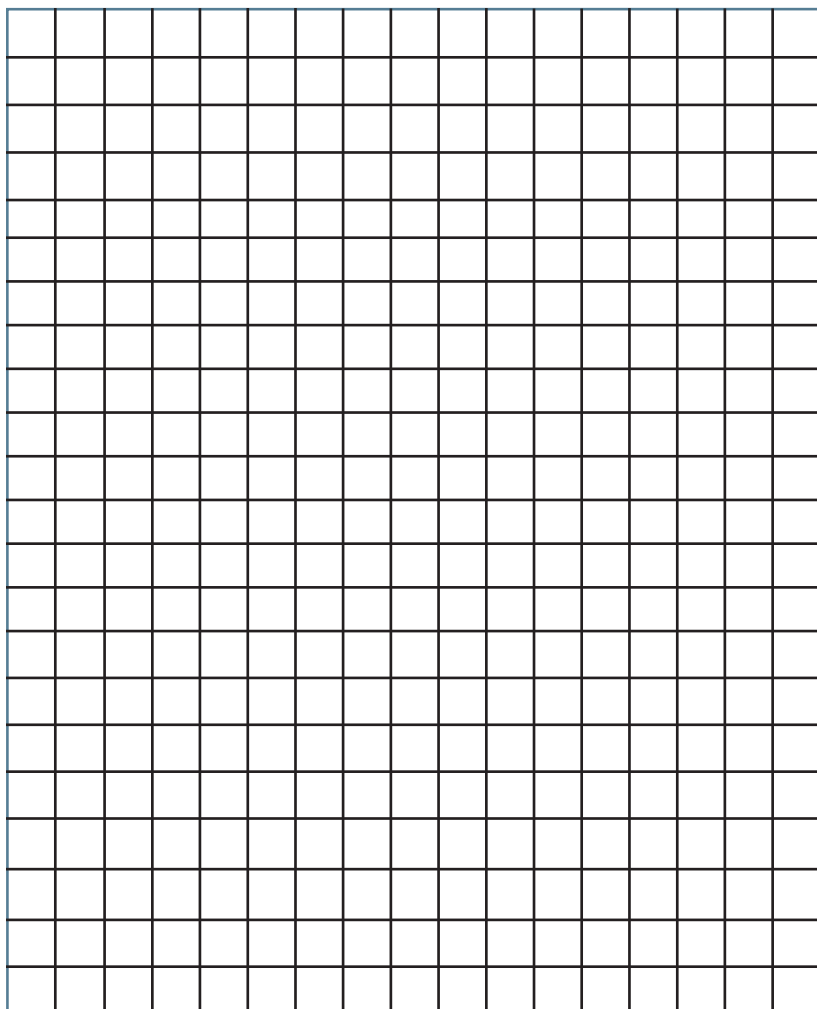
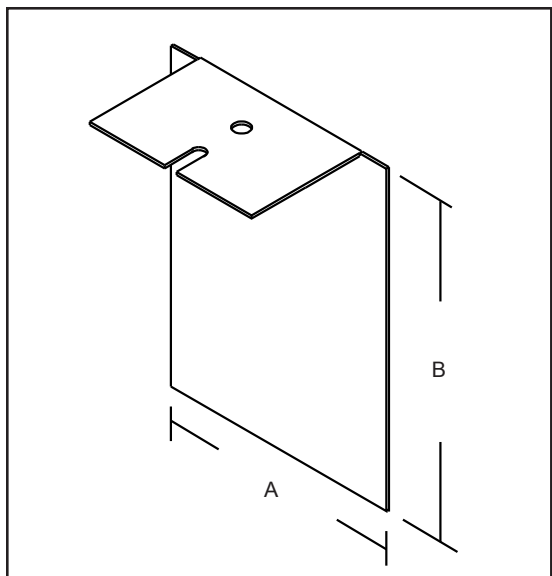
TYPE

CATALOG#

YOUR CUSTOM BAFFLE CAN BE INCORPORATED INTO ANY BELFER MARQUEE FIXTURE. CHOOSE FROM A STANDARD BAFFLE DESIGN AND SIZE BELOW OR DRAW YOUR OWN TO DISCUSS THE POSSIBILITIES. ALL REFLECTORS REQUIRE FIELD DRILLING UNLESS ORDERED WITH THE FIXTURE.

SELECT BAFFLE DESIGN:

BAFFLES	A x B
<input type="checkbox"/> B4B	4"x6" Black
<input type="checkbox"/> B5B	5"x7" Black
<input type="checkbox"/> B2B	2½"x3½" Black
<input type="checkbox"/> BCC	Custom Color Baffle Contact Factory
<input type="checkbox"/> BCB	Custom Baffle Job Plans or Drawings are Required



MULTI-CIRCUITING:

Standard product is prewired for single circuit

- ☐ DCT 2 Circuit, Per Foot
- ☐ TCT 3 Circuit, Per Foot
- ☐ QCT 4 Circuit, Per Foot
- ☐ MCT Custom Multi Circuit, Per Foot

NOTE:

- Multi-Circuiting diagram is required
- Multi-Circuiting must be ordered with a MQ 2500 series Marquee strip



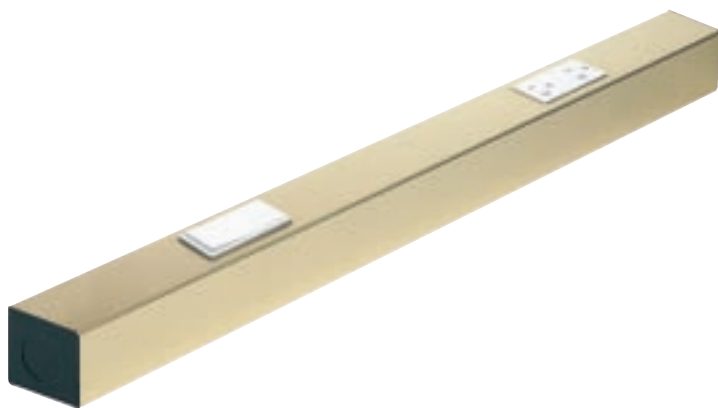
SWITCH AND OUTLET:

For MQ 2502 and MQ 2504 Series

- ☐ DSWT Decora Switch, 15 amp White
- ☐ DOWT Decora Outlet, 15 amp White

NOTE:

- Decora switch and outlet for MQ 2502 and MQ 2504 series only
- Field modification required unless ordered with fixture
- Switch and outlet are UL and CUL Listed Damp Location only
- Please indicate placement on fixture with order
- Minimum distance to end of fixture is 2"
- Minimum distance between accessories is 2"
- Minimum distance between accessories and center of nearest socket is 4"



PROJECT

TYPE

CATALOG#

DECORATIVE END CAPS:

For MQ 2501, MQ 2502, MQ 2504 and MQ 2505 Series

- ☐ ECWT 2" White Decorative End Cap
- ☐ ECBK 2" Black Decorative End Cap
- ☐ ECSA 2" Satin Aluminum Decorative End Cap

For MQ 2503 Series

- ☐ EC3WT 1½" White Decorative End Cap
- ☐ EC3BK 1½" Black Decorative End Cap
- ☐ EC3SA 1½" Satin Aluminum Decorative End Cap

